

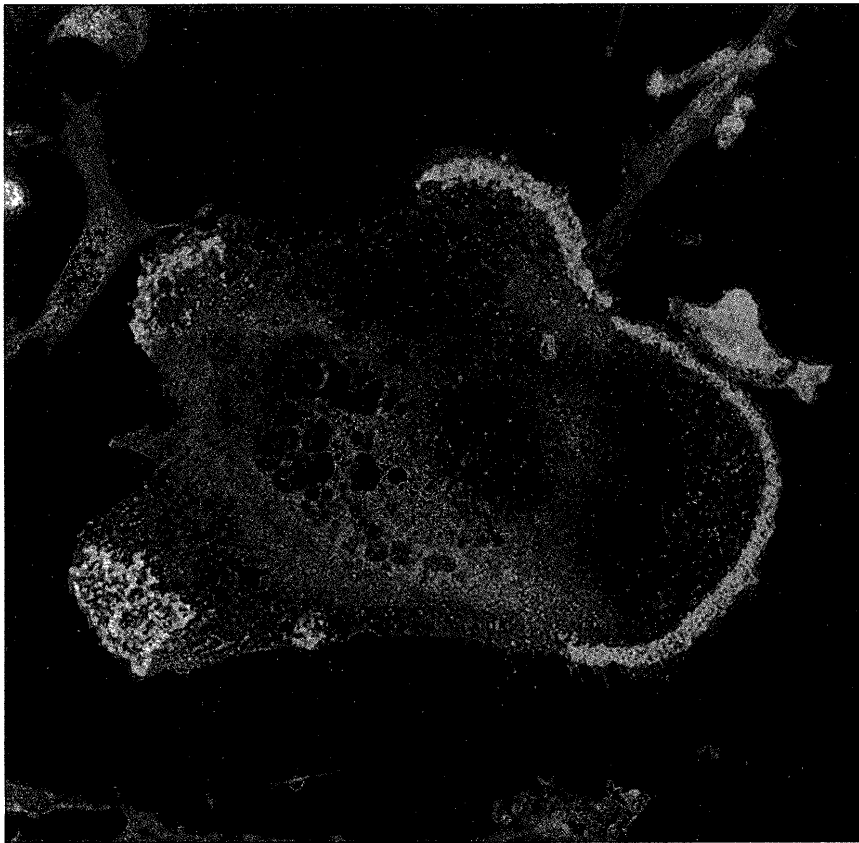
岐阜歯科学会雑誌

第29巻第2号 平成14年10月

Volume

29

Number 2
October
2002



Confocal laser scanning micrograph of a cultured osteoclast showing F-actin stained with rhodamine-phalloidin, red color, and $\alpha_5\beta_1$ integrin stained with anti- $\alpha_5\beta_1$ integrin antibody, green color. Yellow or orange color indicates colocalization.

岐阜歯科学会
THE GIFU DENTAL SOCIETY

岐 歯 学 誌

J. Gifu Dent. Soc.

The Journal of Gifu Dental Society