

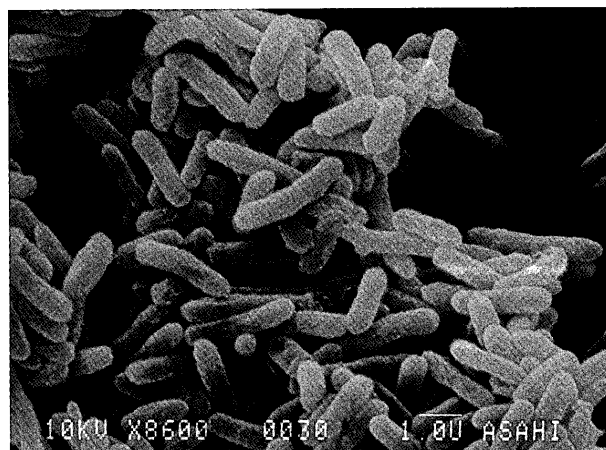
岐阜歯科学会雑誌

第30卷第3号 平成16年2月

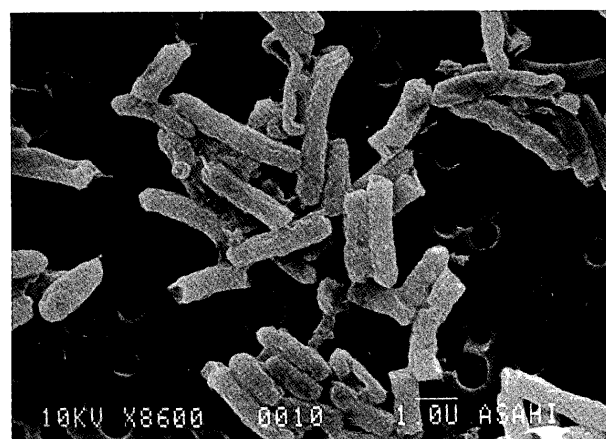
Volume

30

Number 3
February
2004



a



b

Morphological changes of bacteria by repeated BK water treatments.
a : control, b : E. Coli cells destroyed completely by four BK water treatments. ×8,600 (page 228)

The Journal of Gifu Dental Society

岐阜歯科学会
THE GIFU DENTAL SOCIETY

岐 歯 学 誌

J. Gifu Dent. Soc.